

INNOTECH ASPIRON (2010)

Artfully Designed – Passionately Engineered



**An extreme supercar
with a Corvette engine**

INNOTECH INTERNATIONAL, s.r.o.

Zdenek Mrkvica

Phone: (+420) 603 474 400

E-mail: info@innotechcorvettes.com

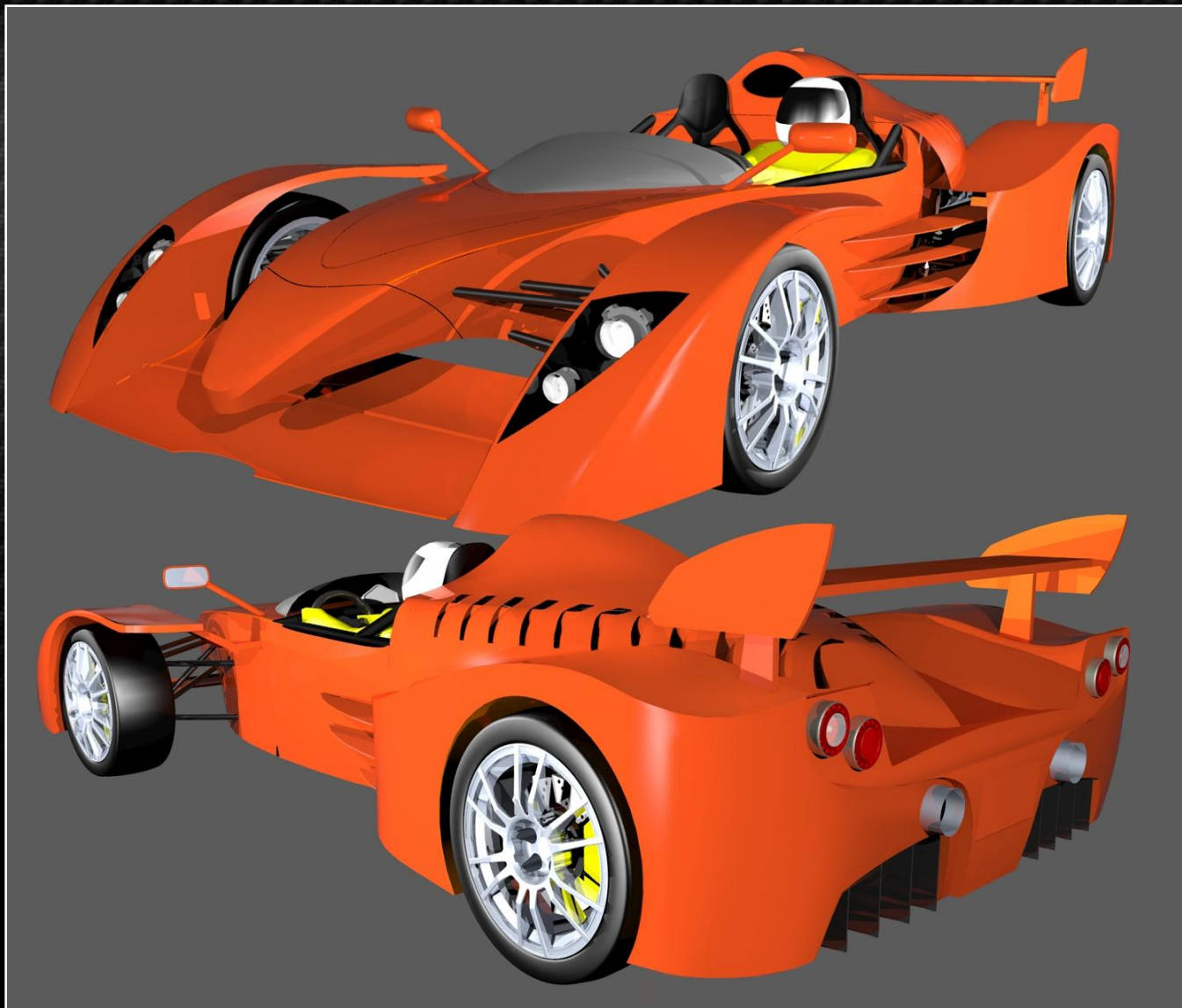
web: www.innotechcorvettes.com

INNOTECH MOTORS

Artfully Designed – Passionately Engineered

INNOTECH

Innovative Distinction



INNOTECH Aspiron is a very light and powerful mid-engined sports car for road and track use, without the electronic nanny features which limit the joy of spirited driving.

This a high performance adrenaline booster for hard core drivers, built for weekend track day fun and for the pure enjoyment of sheer speed. Aspiron is a welcome alternative to all those smooth, comfortable, quiet, safe, ecological and politically correct - but boring automobiles, which we drive to work or take for a family trip.

Aspiron delivers the best mix of modern design, extreme performance and value for money.

POWER IS NOTHING WITHOUT STYLING

It has race car styling, with fully open body and a race-like, yet spacious cockpit equipped with carbon fibre seats, adjustable aluminum pedals, and a multifunctional dash logger.

Aspiron's body is made of fiberglass and carbon fibre. Getting in and out is quite easy, as the upper frame tubing runs just 700 mm above the road.

INNOTECH INTERNATIONAL, s.r.o.

Zdenek Mrkvica

Phone: (+420) 603 474 400

E-mail: info@innotechcorvettes.com

web: www.innotechcorvettes.com

INNOTECH MOTORS

Artfully Designed – Passionately Engineered

INNOTECH

Innovative Distinction

Dimensions (4330 x 2020 x 1050 mm, wheelbase 2700 mm), curb weight 750-800 kg.

Frame and suspension: strong and light Cr-Mo tubular space frame can handle up to 1000 hp and 1000 Nm of torque. Aspiron has a race car style front and rear suspension, with coil springs and adjustable shocks built-in the body.

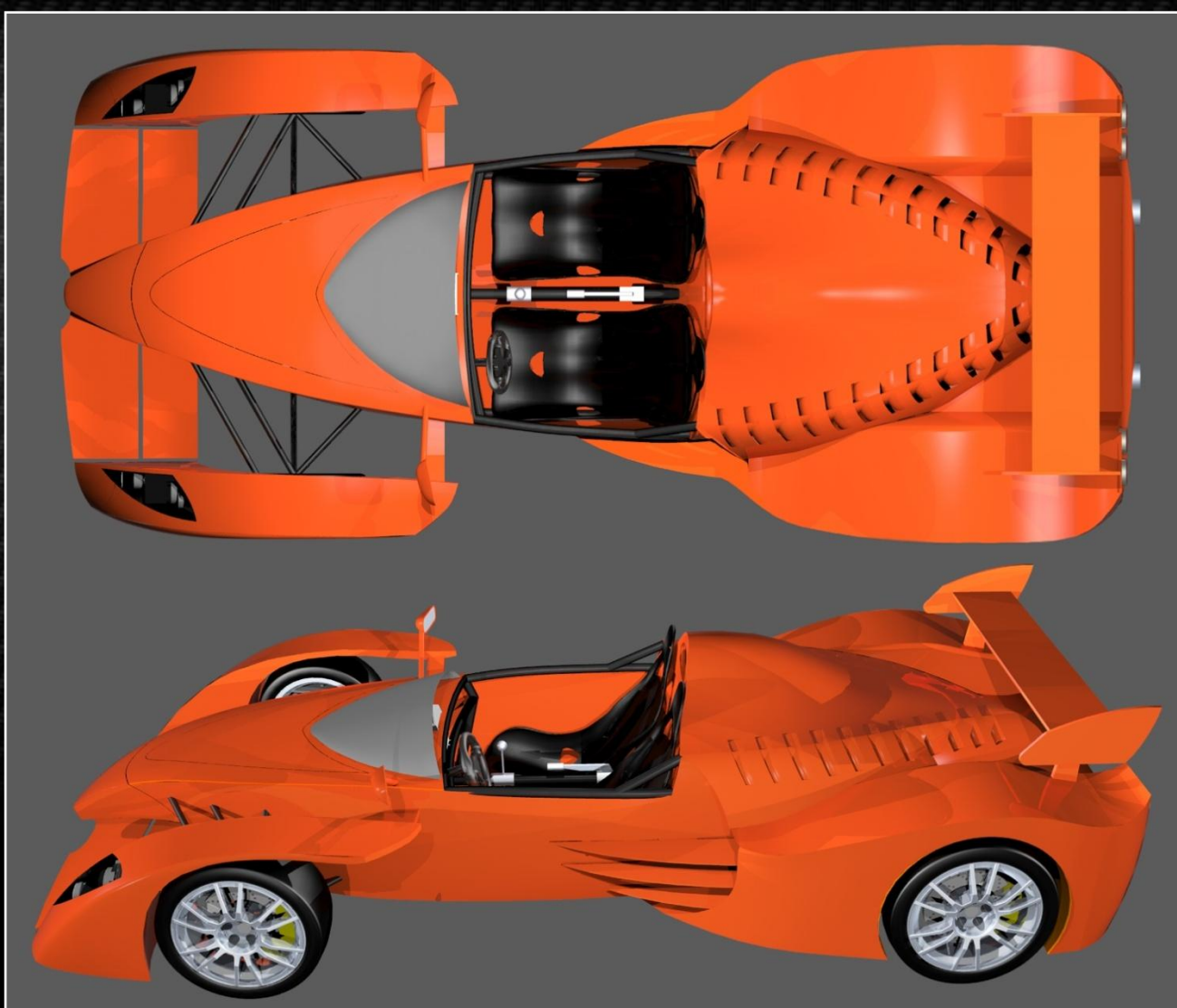
Brakes: 14" (355mm) or 15" (380mm) ventilated, drilled and slotted rotors, 4 or 6 piston calipers, w/brake bias adjustment in the cockpit. Optional titanium or carbon ceramics rotors.

Wheels: forged aluminum 8x19" front and 12x20" rear, either O.Z. Ultraleggera or Forgeline (with optional central hub), or ultralight HRE carbon series (aluminum center and carbon rim)

Tires : high performance semi-slicks (road use) or racing slicks (track use), 235/30 ZR 19 front and 345/20 ZR 20 rear

Engines and transmission:

V8 GM (Corvette): LS2 (6.0L), LS3 (6.2L) and LS7 (7.0L), either stock or modified: with horse power range of 400-680 hp (even **730hp/7400rpm LS7**) naturally aspirated, or 600-1000+hp twin turbocharged or supercharged, with 6-level boost controller. The engines are mated with 6-speed manual Porsche GT2 (with built-in LSD) transaxle.



Performance : Aspiron will be one of the fastest road and track day cars. With **730hp** naturally aspirated 7.0L **LS7** engine it has an exciting **power/weight ratio** over **900 hp/tonne** .

INNOTECH INTERNATIONAL, s.r.o.

Zdenek Mrkvica

Phone: (+420) 603 474 400

E-mail: info@innotechcorvettes.com

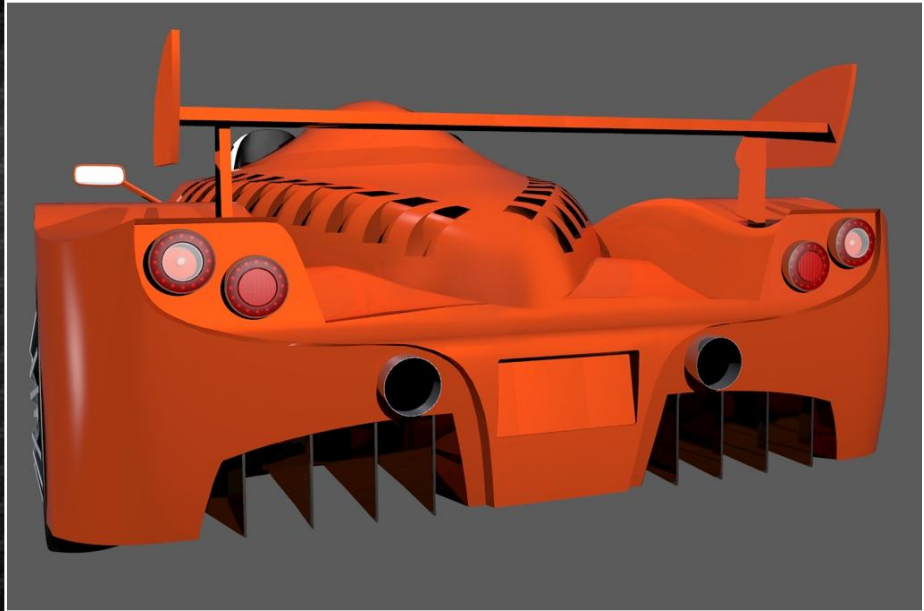
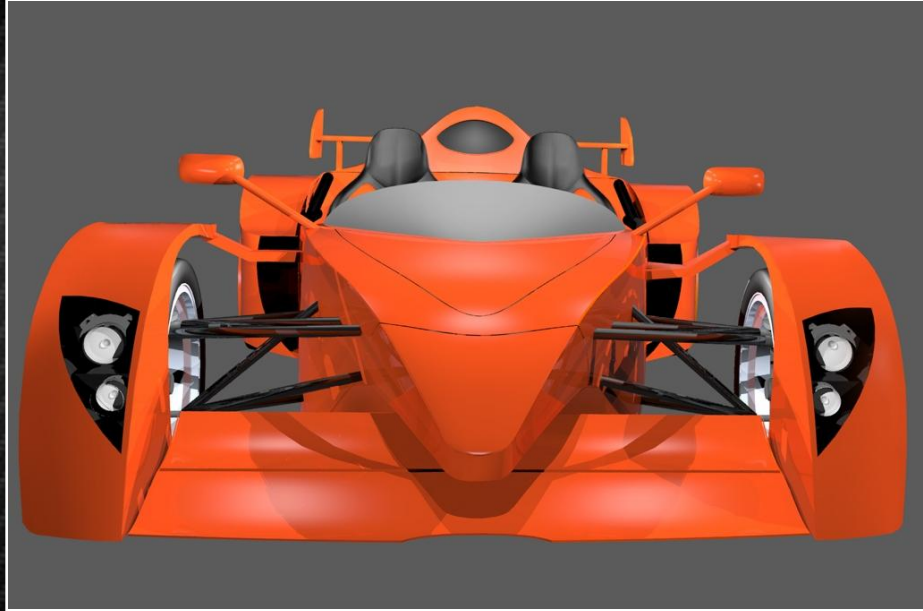
web: www.innotechcorvettes.com

INNOTECH MOTORS

Artfully Designed – Passionately Engineered

INNOTECH

Innovative Distinction



With the GM LS engines the Aspiron is maintenance friendly world-wide. These engines have earned a reputation for low maintenance costs, durability, excellent fuel consumption and low emissions related to performance. When modified to run on E85 biofuel, the Aspiron can become an ecological supercar.

Timing is great for the cars like the Aspiron. New race tracks are being built around the world and the existing ones are undergoing reconstruction, which makes them suitable places for the enthusiasts to enjoy extreme performance cars like Aspiron in relative safety.



INNOTECH INTERNATIONAL, s.r.o.
Zdenek Mrkvica
Phone: (+420) 603 474 400
E-mail: info@innotechcorvettes.com
web: www.innotechcorvettes.com

INNOTECH MOTORS
Artfully Designed – Passionately Engineered

INNOTECH
Innovative Distinction